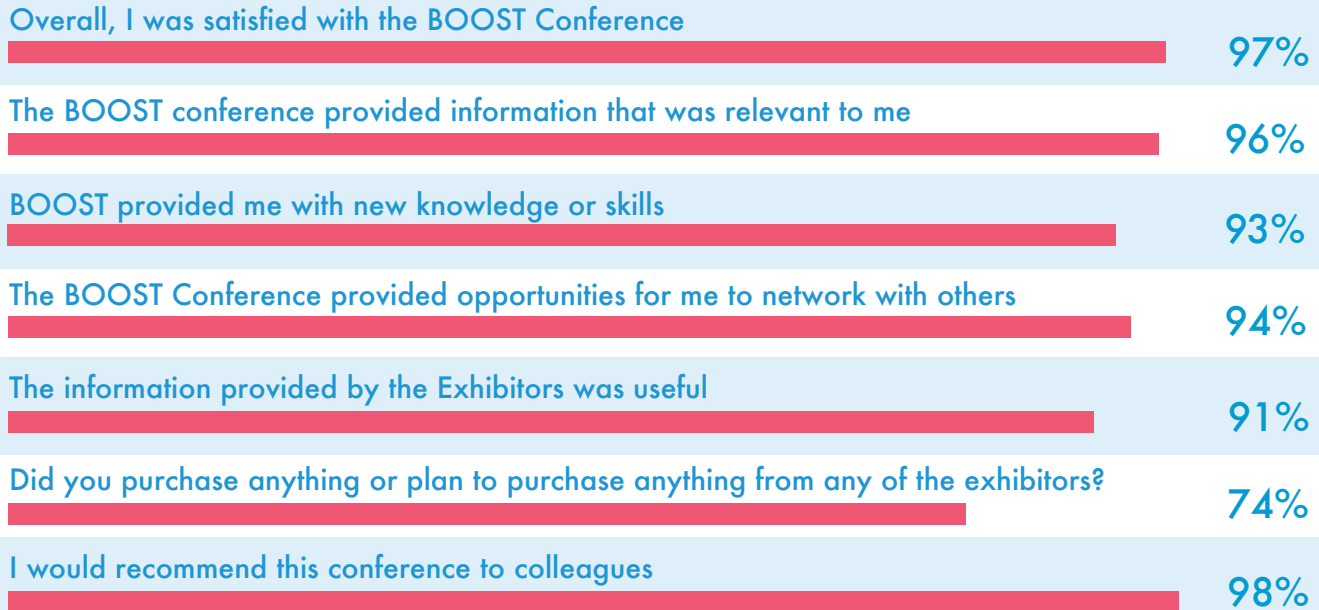


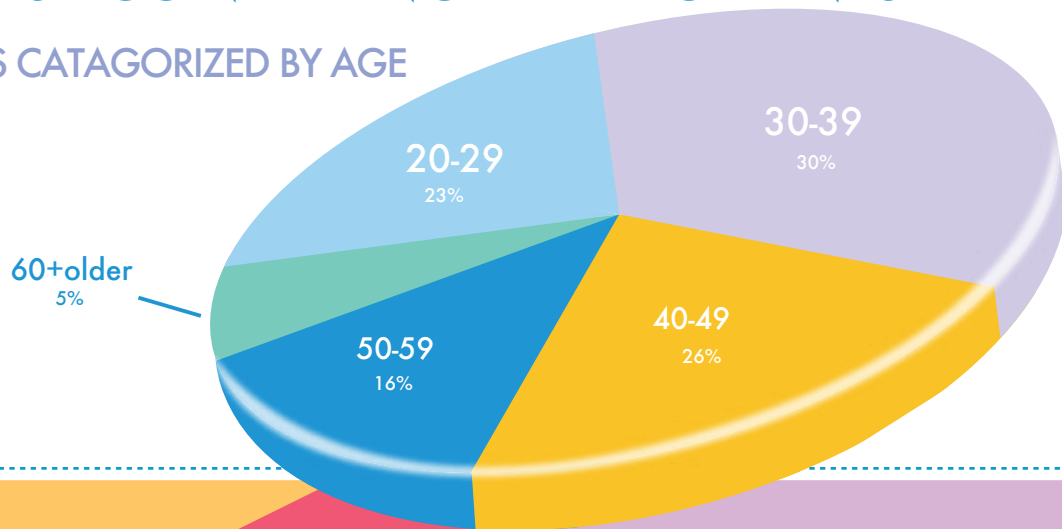
# FEEDBACK ON THE 2016 BOOST CONFERENCE

WE ASKED THE 2015 BOOST CONFERENCE PARTICIPANTS TO RATE THE FOLLOWING STATEMENTS FROM STRONGLY AGREE- AGREE- NEITHER AGREE OR DISAGREE- DISAGREE- OR STRONGLY DISAGREE  Strongly Agree



## THE BOOST CONFERENCE PARTICIPANTS

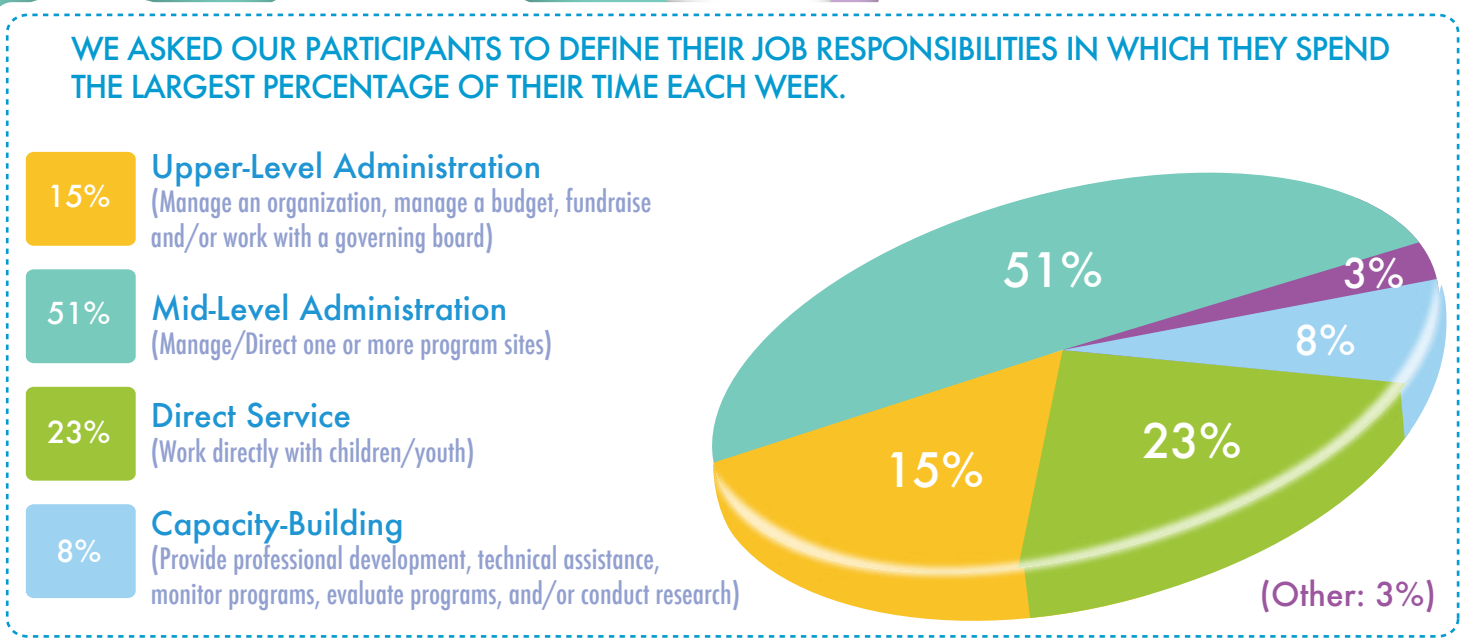
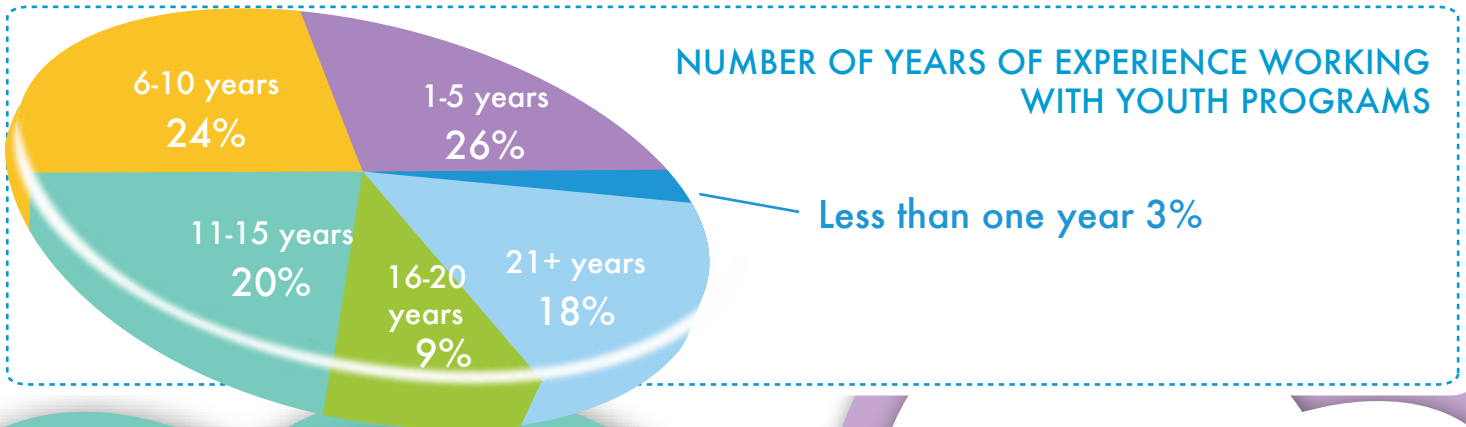
PARTICIPANTS CATAGORIZED BY AGE



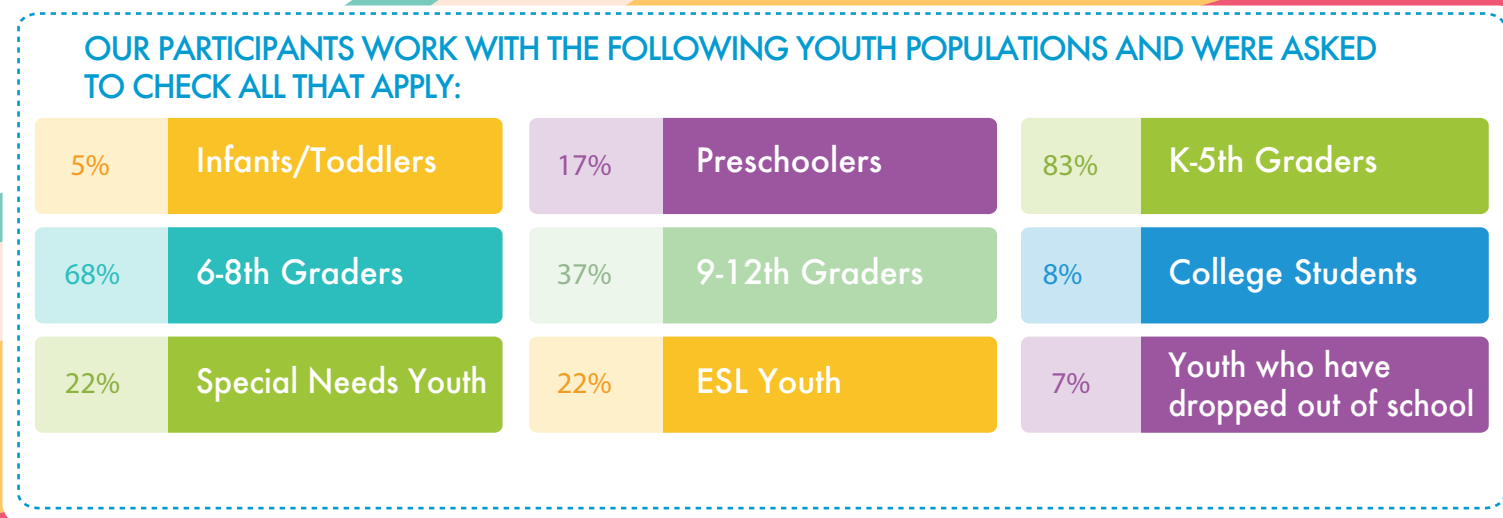
PARTICIPANTS CATAGORIZED BY HIGHEST LEVEL OF EDUCATION



# THE BOOST CONFERENCE PARTICIPANTS



75% Work with one or more youth programs      68% Work Full-Time (35 hours/week or more)



## TYPES OF ORGANIZATIONS THAT ATTEND BOOST

11% Government Agency

1% Other Public Agency

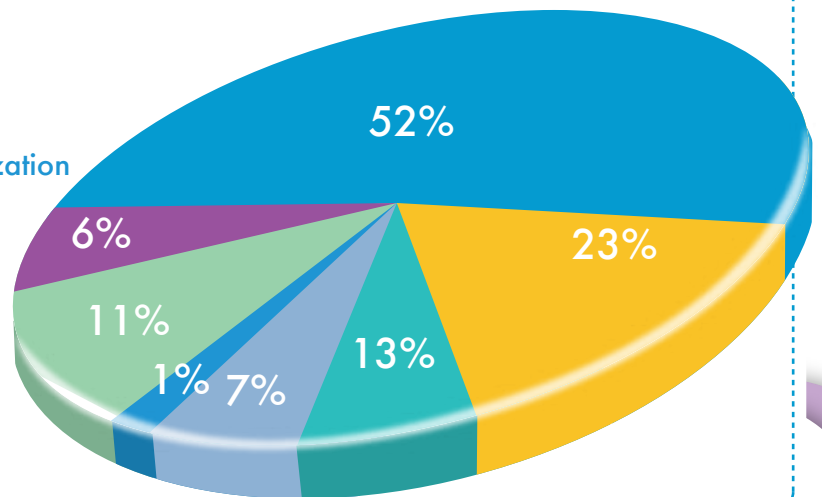
13% Affiliate of National Non-Profit Organization

23% Independent CBO

6% Faith-Based Organization

52% School

7% Other



## ATTENDEE ORGANIZATIONS PROVIDE SERVICES DURING THE FOLLOWING TIMES

96% After School

24% During School

17% Evenings

29% Intersession/  
School Breaks

63% Summer

21% Weekends

52% Before School

## ACTIVITIES AND/OR SERVICES OUR ATTENDEE ORGANIZATIONS PROVIDE FOR YOUTH

78% Before and After School Programs

9% Gang and Violence Prevention

19% Alcohol, Tobacco, and other Drug Prevention

41% Character Education

18% Service Learning and Volunteer Programs

10% Parks & Recreation

14% Safe Schools

41% Curriculum & Academic Support Programs

5% Homeless and Runaway Youth

20% Family Support Services

2% Law Enforcement

10% Community Schools

5% School Counseling

18% School Age Care & Childcare

15% Jobs, Internships, and Career Programs

24% Community Based Organizations

10% Parent Teacher Organizations

2% Probation

21% Mentoring Programs

13% E-Learning/ Education Technology

32% Camps

8% Foster Youth Services

7% Child Advocates

3% Faith-Based Programming

57% Arts & Culture

52% Summer Programs

8% Health Care

11% Special Education

17% Parents/Guardians Support

2% Military Programs

15% Organized Sports League

21% Teachers

5% School Boards

4% LGBTQ

2% Policymakers

47% STEM/STEAM

4% Local Business

2% ROP

30% Healthy Behaviors

25% Other

### GEOGRAPHIC REPRESENTATION

61% California

39% Other States

46 States Represented  
3 Countries Represented

[CLICK HERE TO SEE WHAT OUR PARTICIPANTS HAD TO SAY ABOUT THE 2015 BOOST CONFERENCE](#)