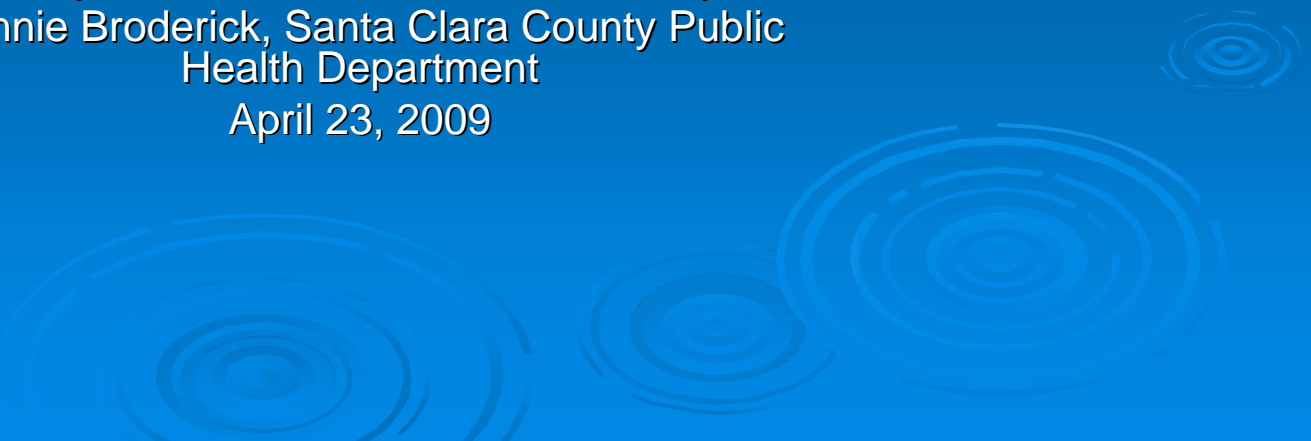


Afterschool Partners in Health: We Can't Do It Without Them!

Mary Hoshiko, YMCA of Silicon Valley
Bonnie Broderick, Santa Clara County Public
Health Department
April 23, 2009



Partners “Out of the Box”

- Who are the folks on your table?
- How can they be partners in health with your afterschool programs?
- Who else might be ‘out of the box’?

Healthy Equity

Everyone has the opportunity to “attain their full health potential” and no one is “disadvantaged from achieving this potential because of their social position or other socially determined circumstance”

Social Determinants

Life-enhancing resources, such as food supply, housing, economic and social relationships, transportation, education, and health care, whose distribution across populations effectively determines length and quality of life.

Societal Conditions

- Social
- Economic
- Physical environment

Psychosocial Factors

- Social
- Psychological

Health Disparities

“Differences in the incidence and prevalence of health conditions and health status between groups.”

Health disparities become *health inequities* when they are the result of the systematic and unjust distribution of the social determinants of health.

Healthy Communities

Our environments cultivate our communities and our communities nurture our health.

When inequities are high and community assets are low, health outcomes are worst.

When inequities are low and community assets are high, health outcomes are best.

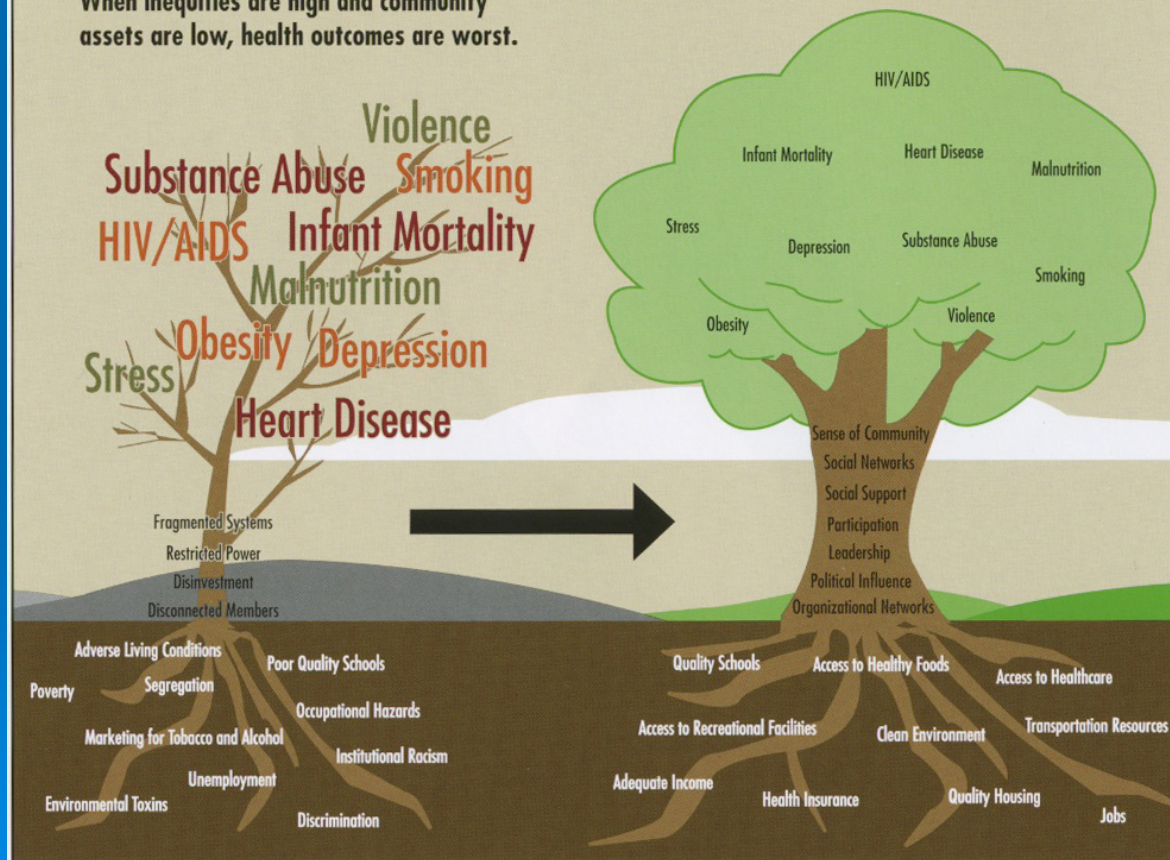
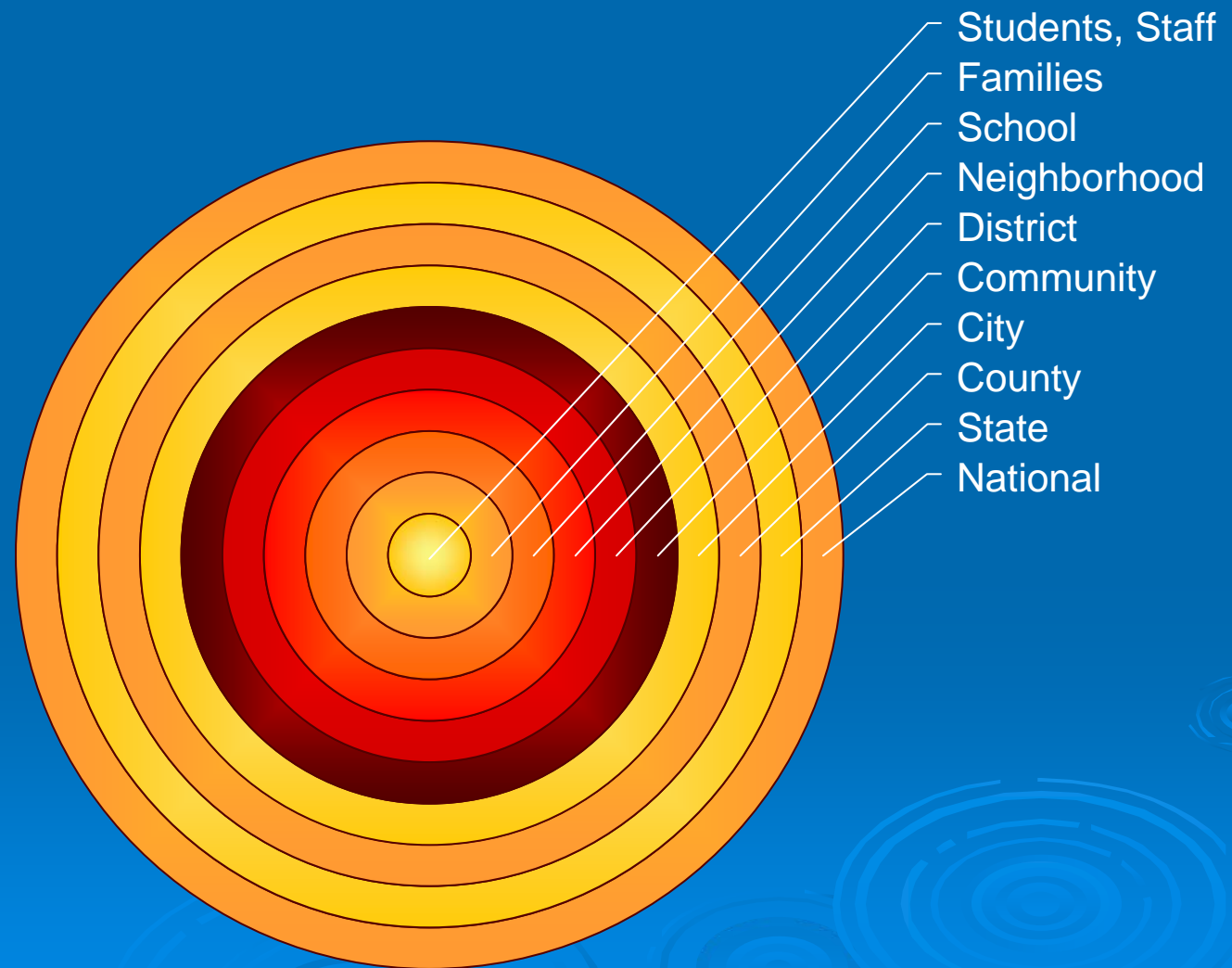
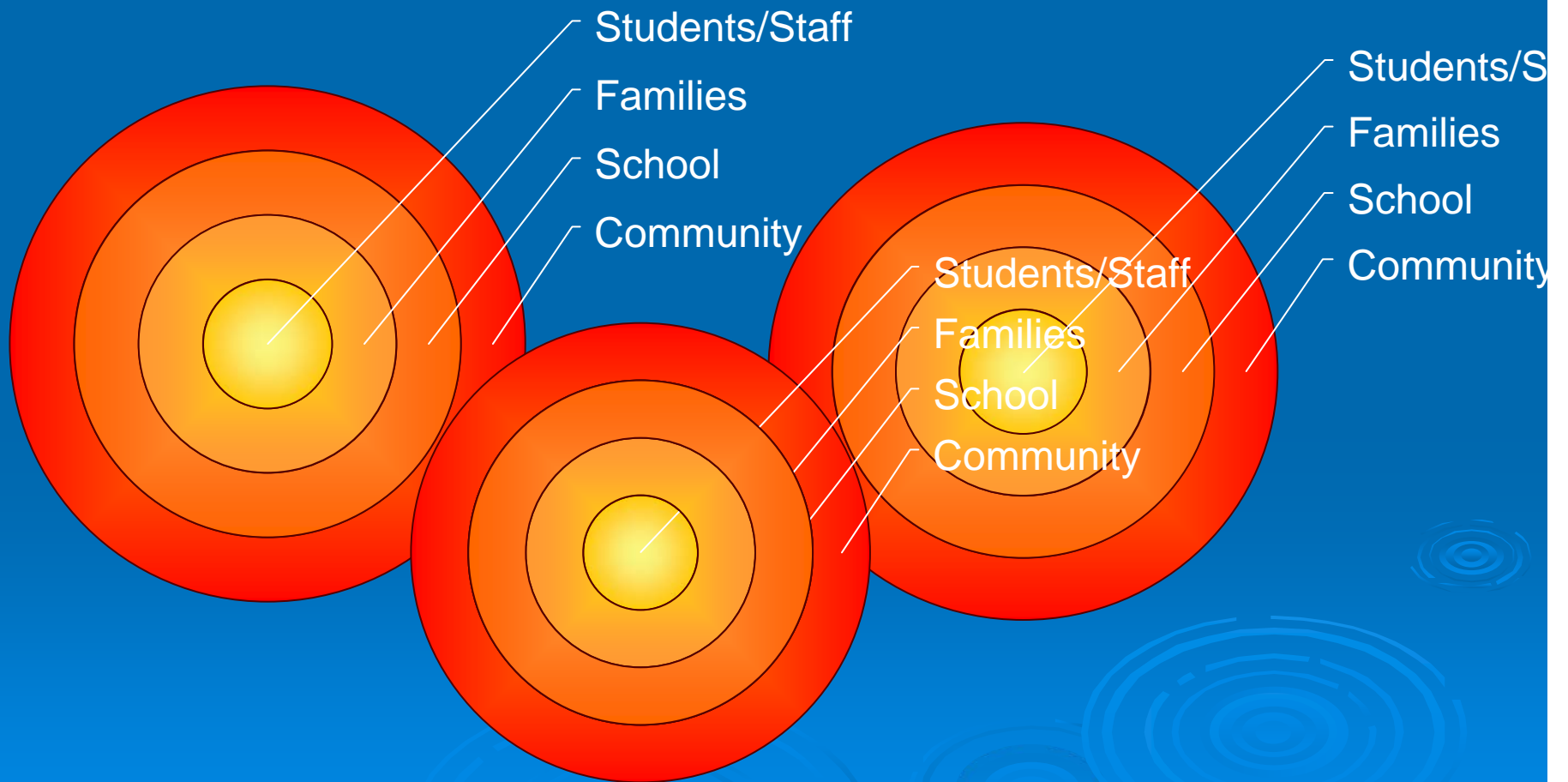


Figure adapted from Anderson et al, 2003; Marmoeal, 1999; and Wilkinson et al, 2003.³⁹⁻⁴¹

Afterschool Spheres of Influence



Together We Can Change a Community



The Spectrum of Prevention

Influencing Policy & Legislation

Changing Organizational Practices

Fostering Coalitions and Networks

Educating Providers

Promoting Community Education

Strengthening Individual Knowledge & Skills

Partners At Every Level

Who are they?

The Spectrum of Prevention

Influencing Policy & Legislation

Changing Organizational Practices

Fostering Coalitions and Networks

Educating Providers

Promoting Community Education

Strengthening Individual Knowledge & Skills

Creating the Partner Plan

- Who?
- How?
- Why is afterschool important to them?
- Why are they important to afterschool?
- What 'language' do we need to speak?

Case Study Example: Santa Clara County

Partnerships Take Energy

- Strengths
- Challenges



Funding for Health in Afterschool

- Role of Partners
- What is being funded?
- Where is the funding?

Thank You!



SPECTRUM OF PREVENTION

The Spectrum of Prevention is a systematic tool that promotes a multifaceted range of activities for effective prevention. Originally developed by Larry Cohen while working as Director of Prevention Programs at the Contra Costa County Health Department, the Spectrum is based on the work of Marshall Swift in treating developmental disabilities. It has been used nationally in prevention initiatives targeting traffic safety, violence prevention, injury prevention, nutrition, and fitness.

The Spectrum identifies multiple levels of intervention and helps people move beyond the perception that prevention is merely education. The Spectrum is a framework for a more comprehensive understanding of prevention that includes six levels for strategy development. These levels, delineated in the table below, are complementary and when used together produce a synergy that results in greater effectiveness than would be possible by implementing any single activity or linear initiative. At each level, the most important activities related to prevention objectives should be identified. As these activities are identified they will lead to interrelated actions at other levels of the Spectrum.

LEVEL OF SPECTRUM	DEFINITION OF LEVEL
6. Influencing Policy and Legislation	Developing strategies to change laws and policies to influence outcomes
5. Changing Organizational Practices	Adopting regulations and shaping norms to improve health and safety
4. Fostering Coalitions and Networks	Convening groups and individuals for broader goals and greater impact
3. Educating Providers	Informing providers who will transmit skills and knowledge to others
2. Promoting Community Education	Reaching groups of people with information and resources to promote health and safety
1. Strengthening Individual Knowledge and Skills	Enhancing an individual's capability of preventing injury or illness and promoting safety

265 29th Street
 Oakland, CA 94611
 510.444.7738
 fax 510.663.1280

Community Partners - Santa Clara County Funding/Match Resources

Schools

District*
County Office of Education*
Region Afterschool Partnership

American Cancer*
American Heart*
Breathe California
American Lung
American Diabetes*
Diabetes Society

Public Health Department
Kaiser Permanente*
Hospital Systems
Hospital Foundations
County Hospital/Clinics

Food Banks
Grocers (Whole Foods, Safeway)*
Farmer's Markets
Local Food Distributors
Farm Council
Food Programs/Food Stamps

Government

Parks and Recreation*
General Fund
Elected officials
Public Health Department*

Businesses

Barnes and Noble

Community Based Organizations

YWCA/YMCA*
JCC
Generations G-Team
Digital Clubhouse

Network*

Service Clubs
BAWSI*
City Year*
Future Families*
Girl Scouts*
San Jose Arts Academy*
Starting Arts*
Elks Lodge*

Foundations

Agricultural
Medical/Health
Education
Community

State Grants

Garden Grants
Physical Education
Physical Activity

Federal Grants

Carol M White
CDC REACH
HHS Minority Health

Collaborations

Health Collaborations
Afterschool Collaborations
Learning Communities



Harvest of the Month[®]

Harvest of the Month features ready-to-go tools and resources that can be used in diverse applications within the school environment and are based on the 2005 U.S. Dietary Guidelines for Americans. It provides educators, prekindergarten through grade 12, with materials to give students hands-on opportunities to explore, taste and learn about the importance of eating fruits and vegetables and being active every day. (See Monthly Elements on reverse side for descriptions of materials.)

Harvest of the Month provides the opportunity for collaboration among educators, child nutrition staff, school administrators, students, parents, the local media and retail outlets — all of whom are striving toward the goal of increasing knowledge of, access to and preference for fruits and vegetables and physical activity. It also supports other initiatives of the *Network for a Healthy California*, such as the *Children's Power Play! Campaign*.

A training module guides and supports users on how to effectively use all program materials and resources. This module includes a short DVD providing a visual experience of **Harvest of the Month** in action. Additional tools are included to expand on implementation strategies, explore the kinds of content contained within the monthly educator newsletters, and demonstrate how activities can be linked to several core curricular areas and the *Children's Power Play! Campaign*.

All program materials can be downloaded free at www.harvestofthemonth.com. Within this site, the *Educators' Corner* provides teachers with additional activities, lesson ideas, recipes, student assessments and a wealth of resources to help implement a successful program.



Why Harvest of the Month?

As Champions for Change, we want the best for students — for them to be healthy and more active. Studies show that healthy eating and daily physical activity can have a profound impact on the body and improve the ability to learn and comprehend. The *Network for a Healthy California* developed **Harvest of the Month** to engage students in a variety of settings where nutrition education can have the biggest impact — the classroom, cafeteria, home and community.

It Works!

"Harvest of the Month is outstanding and has made a great difference in both staff eating habits and student preferences. It is one of the most valuable programs we've had. Anytime you can integrate food into curriculum, students become that much more engaged."

– **2nd Grade Teacher**

"My son has been telling me about the many fruits and vegetables he tries at school. When we go to the grocery store, I am surprised he knows so many interesting things about fruits and vegetables. I can't believe that he's so willing to try new foods."

– **Parent of 8th Grade Student**

Harvest of the Month was created for use by low-resource school districts that are partners with the *Network for a Healthy California*, with funding provided by the U.S. Department of Agriculture's Food Stamp Program. Developed by the California Department of Public Health's Cancer Prevention and Nutrition Section, this program also received support and guidance from the California Department of Education, California Department of Food & Agriculture, educators, curriculum specialists, child nutrition staff, agricultural groups and organizations.



Harvest of the Month

Monthly Elements

The monthly elements are targeted to students, prekindergarten through grade 12, and their families. These elements are designed to promote change in eating behaviors by engaging students in the learning process and building their skills in accessing information, analyzing influences, decision-making, self-management and advocacy. All elements can be downloaded free at www.harvestofthemoth.com. Visit the site to learn which California grown fruits and vegetables are featured each month.

Educator Newsletters:

The monthly educator newsletters are scientifically accurate and provide hands-on activities, tools and ideas for open-ended study by students, including taste testing and school gardening; sample physical activities to support developmental skills such as listening, reflexes and hand-eye coordination; and resources for further exploration tied to the core curricular areas.



Family Newsletters:

This monthly newsletter reinforces what kids learn in the classroom and provides parents with nutrition information, healthy eating tips, recipes, ideas for being physically active, and tips for selecting, storing and serving the featured produce. These newsletters are available in English and Spanish. Other languages, translated by local partners, are available in the *Educators' Corner* of the Web site.

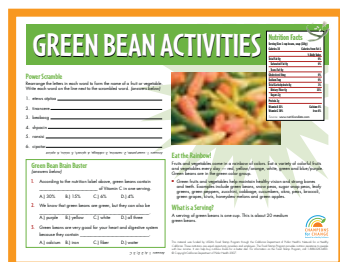


Links to California Content Standards:

Available by grade level clusters, grids identify links to core curricular areas and demonstrate how **Harvest of the Month** activities support specific content standards. The core curricular areas include: English-language arts, science, history-social science, health education and mathematics.

Menu Slicks:

Two-sided templates allow district child nutrition staff to insert the monthly school menu. Skills and knowledge learned in the classroom are reinforced with activities that test memory and motor skills, provide information on the health benefits of fruits and vegetables, and encourage consumption of school meals. These are available in English and Spanish. Other languages, translated by local partners, are available in the *Educators' Corner* of the Web site.



Resources and More:

Additional resources that are available to help implement, support and enhance **Harvest of the Month** include:

- The *How to Grow Healthy Students Guide*, which provides step-by-step instructions and strategies for implementation and collaboration. It can be downloaded from the Web site.
- Four posters featuring California's bounty of fruits and vegetables and promoting physical activity.
- Promotional items developed by the *Network for a Healthy California*, such as school and community tool kits, which can complement activities in the monthly elements.



One of four award-winning posters popular with California students.

Posters and promotional items are available to order through the "On-line Catalog" at www.networkforahealthycalifornia.net.

A more complete list of resources can be found in the *Educators' Corner* of www.harvestofthemoth.com.



Toolbox for Community Educators - Fruit, Vegetable, and Physical Activity Online Guide

Home

How To Use Your *Toolbox*

The English- and Spanish-language *Toolbox* contains seven components.

1. Fruit, Vegetable, and Physical Activity Lessons

There are two adult recommendation lessons, seven easy-to-implement nutrition lessons, six fun physical activity lessons, and one community empowerment lesson. [Go to Lessons](#)



Lessons that are easy and fun for parents and their children to do together are marked with the icon to the left. Encourage parents to involve their children in learning about making healthy food choices and being physically active. Offering lessons where parents and children learn together empowers all family members to take charge of their health and builds strong healthy families.

2. Fruit, Vegetable, and Physical Activity Handouts

The educational handouts support the lessons and remind participants what they have learned during their educational experience. They provide practical information, recipes, and physical activity suggestions that will encourage behavior change. [Go to Handouts](#)

3. Evaluation Tool

The *Quick Nutrition and Physical Activity Quiz (Quiz)* measures your participants' knowledge of fruit and vegetable and physical activity recommendations and their related health benefits. The *Quiz* can be administered before and after you conduct a lesson to measure improvements in your participants' knowledge. You may want to add new questions to the *Quiz* or create your own evaluation tool. Using evaluation tools to evaluate participant skill development and understanding of the advocacy process can help you to measure the success of your efforts. [Go to Quick Nutrition and Physical Activity Quiz](#)

4. Resources

There are two resources in the *Toolbox*.

- An English- and Spanish-language poster, entitled *Energize Your Body with Fruits and Vegetables!*, is used as a visual aid for several nutrition lessons. To purchase the poster go to the [Network's online catalog](#).
- Dr. Richter's *Fresh Produce Guide* contains useful information on fruit and vegetable selection, storage, and seasonal availability. The *Fresh Produce Guide* supports several nutrition lessons and enhances your

For more information about fruits, vegetables, and physical activity, visit us at www.cachampionsforchange.net or call 1-888-328-3483. Funded by the USDA Food Stamp Program, an equal opportunity provider and employer.

©2008 California Department of Public Health [Acknowledgements](#) | [Disclaimer & Privacy Policy](#)
Visit or return to the *Network for a Healthy California* Web site at: www.networkforahealthycalifornia.net

knowledge on fruits and vegetables. To purchase the guide call 1-800-421-8871.

5. Educational Videos

There are two educational videos in the *Toolbox*.

***A Day in the Life* (English, 10 minutes)**

This video depicts the real life story of Jeannette and her family and the positive changes they've made in their eating and physical activity habits.

***Love is Conquered by Food* (Spanish, 20 minutes)**

This video uses a telenovela-style comedy to illustrate the importance of eating a diet that is rich in fruits and vegetables and doing physical activity every day. The DVD will also include extras such as media outreach commercials and other relevant outreach materials.

Organizations can purchase the videos through the [Network's online catalog](#).

6. Fruit, Vegetable, and Physical Activity Playing Cards

There are five decks of English- and Spanish-language playing cards that are used to support several lessons in the *Toolbox*. Organizations can purchase the playing cards through the [Network's online catalog](#).

7. Shake it Up! Tool Kit Version Music CD

The CD is to be played during the physical activity lessons, which require your participants to dance, walk, play, or just move their bodies. It can also be played during breaks and between lessons. The CD has multiple tracks including fun fruit and vegetable songs and guided physical activity steps. You'll find contemporary, gospel, African dance, instrumentals, and one Spanish language track to use to get participants moving. Organizations can purchase the CD through the [Network's online catalog](#).

Putting the *Toolbox* into Practice

The *Toolbox* can be used with small or large classes. You can choose to use the lessons and handouts to teach a series of classes on nutrition and physical activity or may choose to select one or two of the lessons and handouts for a one-time class, such as a parenting meeting. For the best results, follow these recommendations:

- Start your class by playing the appropriate educational video. If you are working with English-speaking adults, choose *A Day in the Life*. If you are working with Spanish-speaking adults, choose *Love is Conquered by Food*.
- Following the video, conduct a nutrition or physical activity lesson from the *Toolbox*. Try to conduct at least one lesson per week with the same group of participants during a two-month period.

For more information about fruits, vegetables, and physical activity, visit us at www.cachampionsforchange.net or call 1-888-328-3483. Funded by the USDA Food Stamp Program, an equal opportunity provider and employer.

©2008 California Department of Public Health [Acknowledgements](#) | [Disclaimer & Privacy Policy](#)
Visit or return to the *Network for a Healthy California* Web site at: www.networkforahealthycalifornia.net


- Be sure to conduct the *Advocate for Fruits, Vegetables, and Physical Activity in Your Community* lesson to empower your participants to make changes in their communities that support fruit and vegetable consumption and physical activity.
- Use the *Quick Nutrition and Physical Activity Quiz* or an evaluation tool of your choice to measure how your participants progress through their learning experience.

For more information about fruits, vegetables, and physical activity, visit us at www.cachampionsforchange.net or call 1-888-328-3483. Funded by the USDA Food Stamp Program, an equal opportunity provider and employer.

©2008 California Department of Public Health [Acknowledgements](#) | [Disclaimer & Privacy Policy](#)
Visit or return to the *Network for a Healthy California* Web site at: www.networkforahealthycalifornia.net

Children's Power Play! Campaign Regional Contacts

Each of the 11 *Regional Networks* offers materials, training, and technical assistance to qualifying local organizations and facilitates communication and collaboration among these organizations. Below is a listing of the *Children's Power Play! Campaign* contact information for each *Regional Network*.

For information about your local *Regional Network*, please contact the lead agency directly. [Map for counties \(PDF\)](#)  involved in each region.

[Bay Area](#) | [Central Coast](#) | [Central Valley](#) | [Desert Sierra](#) | [Gold Coast](#) | [Gold Country](#) | [Los Angeles](#) | [Northcoast](#) | [Orange County](#) | [San Diego-Imperial](#) | [Sierra Cascade](#)

Bay Area Region

Counties: Alameda, Contra Costa, Marin, San Mateo, Santa Clara, and San Francisco
UC Cooperative Extension, Alameda County
1131 Harbor Bay Parkway, Suite 131
Alameda, CA 94502
Phone: (510) 567-6812
Fax: (510) 748-9644
Contact: [Lucrecia Farfan-Ramirez](#) (Intern)

Central Coast Region

Counties: Monterey, San Benito, and Santa Cruz
Monterey County Department of Health
632 E. Alisal St.
Salinas, CA 93901
Phone: (831) 755-2898
Fax: (831) 757-3286
Contact: [Andrea Estrada](#)

[Back to top](#)

Central Valley Region

Counties: Fresno, Kern, Kings, Madera, Mariposa, Merced, and Tulare
Central Valley Health Network
1987 N Gateway Blvd. Ste 101
Fresno, CA 93727
Phone: (559) 255-4300 x11
Fax: (559) 251-1383
Contact: [Melissa Murphy](#)

Desert Sierra Region

Counties: Inyo, Riverside, and San Bernardino
San Bernardino County Department of Public Health
351 N. Mountain View Avenue, Rm 104
San Bernardino, CA 92415-0010
Phone: (909) 387-6380
Fax: (909) 387-6899
Contact: [Melani Dhason](#)

Gold Coast Region

Counties: San Luis Obispo, Santa Barbara, and Ventura
Ventura County Public Health Department
2323 Knoll Drive, Suite 325, 3rd Floor
Ventura, CA 93003
Phone: (805) 677-5267
Fax: (805) 677-5220
Contact: [JoAnn Torres](#)

[Back to top](#)

Gold Country Region

Counties: Alpine, Amador, Calaveras, El Dorado, Mono, Placer, Sacramento, San Joaquin, Solano, Stanislaus, Sutter, Tuolumne, Yolo, and Yuba
Health Education Council
3950 Industrial Blvd. Suite 600
Sacramento, CA 95691
Phone: (916) 556-3344 ext.115
Fax: (916) 446-0427
Contact: [Mellissa Meng](#)

Los Angeles Region

County: Los Angeles
UC Cooperative Extension, Los Angeles County
4800 Cesar E. Chavez Ave.
Los Angeles, CA 90022
Phone: (323) 260-3886
Fax: (323) 881-1951
Contact: [Rachel Surls](#) (Interim)

Northcoast Region

Counties: Del Norte, Humboldt, Lake, Mendocino, Napa, and Sonoma
Sonoma County Family YMCA
1101 College Ave., Suite 215
Santa Rosa, CA 95404
Phone: (707) 543-5810 ext. 204
Fax: (707) 543-5813
Contact: [Deb Harris](#)

[Back to top](#)

Orange County Region

County: Orange
Community Action Partnership of Orange County (formerly Community Development Council)
7180 Lampson Ave.
Garden Grove, CA 92841
Phone: (714) 899-3684 ext.5316
Fax: (714) 899-3624
Contact: [Gaby Hernandez](#)

San Diego Imperial Region

Counties: San Diego and Imperial
UC San Diego, Community Pediatrics
4305 University Ave., Suite 590
San Diego, CA 92105
Phone: (619) 681-0659
Fax: (619) 681-0666
Contact: [Mike Gieck](#)

Sierra Cascade Region

Counties: Butte, Colusa, Glenn, Lassen, Modoc, Nevada, Plumas, Shasta, Sierra, Siskiyou, Tehama, and Trinity
California Health Collaborative
25 Jan Court, Suite 130
Chico, CA 95928
Phone: (530) 345-2483 Ext. 210
Fax: (530) 345-3214
Contact: [Emily Ruffner](#)

[Back to top](#)



Network for a Healthy California

Contractor Listing/Project Coordinator by Region

Federal Fiscal Year (FFY) 2009



Bay Area Region

Alameda, Contra Costa, Marin, San Francisco, and San Mateo Counties

Santa Clara County Public Health Department

(Regional Network - Local Public Health Department)

Bonnie Broderick

Chronic Disease & Injury Prevention
1400 Parkmoor Ave., Ste. 120B, 1st Fl

San Jose, CA 95126

Phone: (408) 793-2706

Fax: (408) 793-2701

bonnie.broderick@hhs.co.scl.ca.us

Physical Activity Specialist

Carmen Bogan

1943 Rosecrest Dr.

Oakland, CA 94602

Phone: (510) 482-8827

Fax: (510) 531-2076

carmenbo@pacbell.net

African American Campaign

Santa Clara County Public Health Department

Monique Woodford

1400 Parkmoor Ave., Ste. 120B, 1st Fl

San Jose, CA 95126

Phone: (408) 793-2717

Fax: (408) 793-2731

monique.woodford@hhs.sccgov.org

Latino Campaign

Santa Clara County Public Health Department

Pamela Harter

976 Lenzen Ave.

San Jose, CA 95126

Phone: (408) 792-5130

Fax: (408) 947-8745

pamela.harter@hhs.sccgov.org

Worksite Program

Santa Clara County Public Health Department

Suellen Haggerty, R.D.

1400 Parkmoor Ave., Ste. 120B, 1st Fl

San Jose, CA 95126

Phone: (408) 793-2719

Fax: (408) 793-2731

suellen.haggerty@hhs.co.santa-clara.ca.us

Retail Program

Santa Clara County Public Health Department

Carlos Torres

976 Lenzen Ave., Unit 1200

San Jose, CA 95126-2737

Phone: (408) 792-5135

Carlos.Torres@hhs.sccgov.org

Children's Power Play! Campaign

University of California, Cooperative Extension, Alameda County

Lucrecia Farfan-Ramirez (Interim)

1131 Harbor Bay Pkwy., Ste. 131

Alameda, CA 94502

Phone: (510) 567-6812

Fax: (510) 748-9644

lfarfanramirez@ucdavis.edu

Acts Community Development

(Faith-Based - Faith Community)

Kendra Carr

1034 66th Ave.

Oakland, CA 94621

Phone: (510) 268-1600

Fax: (510) 568-4125

acts5aday@yahoo.com

Alameda County Community Food Bank

(LFNE - Food Bank)

Bridget Galvan

7900 Edgewater Dr.

Oakland, CA 94621

Phone: (510) 635-3663 ext. 324

Fax: (510) 636-4900

bgalvan@accfb.org

Catrina Armas

7900 Edgewater Dr.

Oakland, CA 94621

Phone: (510) 635-3663 ext. 341

carmas@accfb.org

Alameda County Health Care Services Agency

(LIA - Local Public Health Department)

Diane Woloshin

Nutrition Services

3600 Telegraph Ave.

Oakland, CA 94609-2427

Phone: (510) 595-6458

Fax: (510) 595-6486

diane.woloshin@acgov.org

Alameda County Office of Education - Coalition

(LIA - County Office of Education)

Christine Boynton

313 W. Winton Ave., Ste. 244

Hayward, CA 94544-1136

Phone: (510) 670-4539

Fax: (510) 758-3652

cboynton@husd.k12.ca.us

Alameda County Office of Education - Rock La Fleche

(LIA - County Office of Education)

Toni Adams

313 W. Winton Ave.

Hayward, CA 94544-1136

Phone: (510) 670-7747

Fax: (510) 670-3747

ttoni@acoee.org

Berkeley Unified School District

(LIA - School District)

Melanie Okamoto

1720 Oregon St.

Berkeley, CA 94703

Phone: (510) 644-6710

Fax: (510) 486-1275

Melanie_Okamoto@berkeley.k12.ca.us

Children's Council of San Francisco

(LFNE)

Bergen Watterson

445 Church St.

San Francisco, CA 94114-1720

Phone: (415) 276-2929

Fax: (415) 343-3331

bwatterson@childrenscouncil.org

City and County of San Francisco, Department of Public Health

(LIA - Local Public Health Department)

Laura Brainin-Rodriguez

30 Van Ness Ave., Ste. 3500

San Francisco, CA 94102-6080

Phone: (415) 575-5687

Fax: (415) 575-5798

laura.brainin-rodriguez@sfdph.org

Contractor Listing/Project Coordinator by Region FFY09

City of Berkeley Health and Human Services Department

(LIA - Local Public Health Department)
Kate Clayton
1947 Center St., 2nd Floor
Berkeley, CA 94704-1155
Phone: (510) 981-5314
Fax: (510) 981-5335
kclayton@ci.berkeley.ca.us

Contra Costa Health Services

(LIA - Local Public Health Department)
Donna Coit
Community Wellness and Prevention Program
597 Center Ave., Ste. 125
Martinez, CA 94553-4669
Phone: (925) 313-6843
Fax: (925) 313-6840
dcoit@hsd.cccounty.us

East Bay Asian Youth Center

(LFNE - Community-Based)
Susan Yee
2025 E. 12th St.
Oakland, CA 94606
Phone: (510) 533-1092
Fax: (510) 533-6825
susan@ebayc.org

East Oakland Faith Deliverance Center

(Faith-Based - Faith Community)
Wilma Gaines
7425 International Blvd.
Oakland, CA 94621-2805
Phone: (510) 772-8889
Fax: (510) 430-0949
eofdhealth@aol.com

Ecology Center

(LFNE)
Martin Bourque
2530 San Pablo Ave.
Berkeley, CA 94703
Phone: (510) 548-2220
Fax: (510) 548-2240
martin@ecologycenter.org

Ecology Center - EBT Project

(LFNE)
Martin Bourque
2530 San Pablo Ave.
Berkeley, CA 94703
Phone: (510) 548-2220
Fax: (510) 548-2240
martin@ecologycenter.org

Healthy Oakland, Inc.

(Faith-Based - Faith Community)
LaNiece Jones
2580 San Pablo Ave.
Oakland, CA 94612-1160
Phone: (510) 444-9655
Fax: (510) 444-9955
lajpr@aol.com

Marin County Health and Human Services

(LIA - Local Public Health Department)
Linda Armstrong
899 Northgate Dr., Ste. 415
San Rafael, CA 94903-3667
Phone: (415) 473-7059
Fax: (415) 473-6266
larmstrong@co.marin.ca.us

Mount Diablo Unified School District

(LIA - School District)
Ali Medina
1266 San Carlos Ave., A6
Concord, CA 94520
Phone: (925) 458-1601
Fax: (925) 458-2736
medinaa@mdusd.k12.ca.us

Native American Health Center, Inc.

(LIA - Indian Tribal Organizations)
Christina Weahunt
3124 International Blvd., Ste. 201
Oakland, CA 94601-2902
Phone: (510) 535-4400
Fax: (510) 261-6438
chrisw@nativehealth.org

Pacific Coast Farmers Market Association

(LFNE)
Sarah Nelson
5056 Commercial Circle, Ste. E
Concord, CA 94520
Phone: (925) 825-9090
Fax: (925) 825-9101
sarahnelson@pcfma.com

People's Grocery

(LFNE - Community-Based)
Diana Abellera
3236 Market St., #103
Oakland, CA 94608-4332
Phone: (510) 652-7607
Fax: (510) 652-7602
diana@peoplesgrocery.org

San Francisco General Hospital Foundation

(Nonprofit Incentive Awardee - Public Health)
Catherine Wong
Chinatown Public Health Center
San Francisco Dept. of Public Health
1490 Mason St.
San Francisco, CA 94133
Phone: (415) 364-7919
Fax: (415) 986-1140
CKWWong@aol.com

San Francisco Unified School District

(LIA - School District)
Mark Elkin
1515 Quintara St.
San Francisco, CA 94116-1273
Phone: (415) 242-2615
Fax: (415) 242-2618
elkinm@sfusd.edu

San Mateo County Health Services Agency

(LIA - Local Public Health Department)
Lydia Guzman
32 W. 25th Ave., Ste. 203A
San Mateo, CA 94403-2265
Phone: (650) 573-2025
Fax: (650) 577-9223
lguzman@co.sanmateo.ca.us

Santa Clara County Public Health Department

(LIA - Local Public Health Department)
Bonnie Broderick
Chronic Disease & Injury Prevention
1400 Parkmoor Ave., Ste. 120B, 1st Fl
San Jose, CA 95126
Phone: (408) 793-2706
Fax: (408) 793-2701
bonnie.broderick@hhs.co.scl.ca.us

The Regents of the University of California, Cooperative Extension of Alameda County - Child and Youth Nutrition Program

(LIA - University of California Cooperative Extension)
Lucrecia Farfan-Ramirez
1131 Harbor Bay Pkwy., Ste. 131
Alameda, CA 94502-6540
Phone: (510) 639-1270
Fax: (510) 748-9644
cdalameda@ucdavis.edu

Contractor Listing/Project Coordinator by Region FFY09

The Regents of the University of California, Cooperative Extension of Alameda County

(LIA - University of California Cooperative Extension)
Mary Blackburn
Family and Consumer Services
1131 Harbor Bay Pkwy., Ste. 131
Alameda, CA 94502-6540
Phone: (510) 639-1274
Fax: (510) 567-6813
mlblackburn@ucdavis.edu

Trust for the Conservation Innovation, on behalf of Nextcourse

(LFNE - Community-Based)
Susie White
930 Bryant St.
San Francisco, CA 94103
Phone: (415) 640-3762
Fax: (415) 567-0317
susie@nextcourse.org

Niyati Desai
930 Bryant St.
San Francisco, CA 94103
Phone: (415) 734-3158
niyati@nextcourse.org

Urban Resource Systems, Inc.

(LFNE - School-Related)
Abby Jaramillo
326 Prospect Ave.
San Francisco, CA 94110
Phone: (415) 648-4596
Fax: (415) 733-0889
abby@urbansprouts.org

Central Coast Region

Monterey and Santa Cruz Counties

Monterey County Health Department

(Regional Network - Local Public Health Department)

Christine Moss
Community Health Division
1270 Natividad Rd.
Salinas, CA 93906-3122
Phone: (831) 755-4675
Fax: (831) 751-9015
mossacd@co.monterey.ca.us

Physical Activity Specialist

Maggie Barrera
1270 Natividad Rd.
Salinas, CA 93906
Phone: (831) 755-8931
Fax: (831) 422-4899
BarreraMR@co.monterey.ca.us

Latino Campaign

Monterey County Health Department
Lupe Covarrubias-Martinez
632 E. Alisal St.
Salinas, CA 93905
Phone: (831) 796-2873
Fax: (831) 757-3286
covarrubiasl@co.monterey.ca.us

Children's Power Play! Campaign

Monterey County Health Department
Andrea Estrada
632 E. Alisal St.
Salinas, CA 93905
Phone: (831) 796-2898
Fax: (831) 757-3286
EstradaA1@co.monterey.ca.us

Retail Program

Monterey County Health Department
Kathryn Ramirez
1270 Natividad Rd., Rm. 11
Salinas, CA 93906
Phone: (831) 755-8928 ext. 8928
ramirezKL@co.monterey.ca.us

Alisal Union School District

(LIA - School District)

Petra Martinez
680 Las Casitas Dr.
Salinas, CA 93905
Phone: (831) 753-5770 ext. 3261
Fax: (831) 753-3396
Petra.martinez@alisal.org

Monterey County Health Department

(LIA - Local Public Health Department)

Joy Mendoza
Community Health Division
632 E. Alisal St.
Salinas, CA 93905
Phone: (831) 796-2870
Fax: (831) 796-3286
mendozaaj@co.monterey.ca.us

Natividad Medical Foundation

(LFNE)
Isabel Estolano
1441 Constitution Blvd.
P.O. Box 81611
Salinas, CA 93912-1611
Phone: (831) 759-6539
Fax: (831) 796-2833
isabel@natividadfoundation.org
lestolano@gmail.com

Santa Cruz City School District

(LIA - School District)
Jessica Silverman Curcio
Gault Elementary School
1320 Seabright Ave.
Santa Cruz, CA 95062-2525
Phone: (831) 429-3856
Fax: (831) 427-4812
jcurcio@sccs.santacruz.k12.ca.us

Central Valley Region

Fresno, Kern, Madera, Merced, and Tulare Counties

Central Valley Health Network

(Regional Network - Community-Based)

Nichole Mosqueda
1987 N. Gateway, Ste. 101
Fresno, CA 93727
Phone: (559) 255-4300 ext. 17
Fax: (559) 251-1383
Inmosqueda@cvhnclinics.org

Physical Activity Specialist

Leslie Fineza
Phone: (559) 255-4300
lfineza@cvhnclinics.org

African American Campaign

Central Valley Health Network
Dominique Howell
1987 N. Gateway, Ste. 101
Fresno, CA 93727
Phone: (559) 255-4300 ext. 15
Fax: (559) 251-1383
dhowell@cvhnclinics.org

Latino Campaign

Central Valley Health Network
Nichole Mosqueda-Curtin (Interim)
Central Valley Health Network
1987 N. Gateway, Ste. 101
Fresno, CA 93728
Phone: (559) 255-4300 ext. 17
Fax: (559) 251-1383
Inmosqueda@cvhnclinics.org

Worksite Program

Central Valley Health Network
Gerrard Herrera
1987 N. Gateway, Ste. 101
Fresno, CA 93728
Phone: (559) 255-4300 ext. 23
Fax: (559) 251-1383
gherrera@cvhnclinics.org

Contractor Listing/Project Coordinator by Region FFY09

Children's Power Play! Campaign

Central Valley Health Network
Melissa Murphy
1987 N. Gateway, Ste. 101
Fresno, CA 93727
Phone: (559) 255-4300 ext. 11
Fax: (559) 251-1383
mmurphy@cvhnclinics.org

Retail Program

Central Valley Health Network
Abrie Gerhardt (until Jan. 2009)
1987 N. Gateway, Ste. 101
Fresno, CA 93727
Phone: (559) 255-4300 ext. 12
Fax: (559) 251-1383
agerhardt@cvhnclinics.org

Christian Community Baptist Church

(Faith-Based - Faith Community)
Atstelma Jackson
3838 N. West Ave.
Fresno, CA 93705-2703
Phone: (559) 292-5233
Fax: (559) 294-0303
atj2515@hotmail.com

Fresno County Office of Education

(LIA - County Office of Education)
Michelle Roman
1111 Van Ness Ave.
Fresno, CA 93721-2019
Phone: (559) 443-4831
Fax: (559) 443-4842
mroman@fcoe.k12.ca.us

Fresno Unified School District

(LIA - School District)
Sally Fowler
3132 E. Fairmont Ave., Bldg. 5
Fresno, CA 93726-0606
Phone: (559) 248-7175
Fax: (559) 227-5314
Sally.Fowler@fresnounified.org

Greenfield Union School District

(LIA - School District)
Nora Ortiz
5400 Monitor St.
Bakersfield, CA 93307-6399
Phone: (661) 837-3720
Fax: (661) 837-3723
ortizn@gfusd.k12.ca.us

Kern County Superintendent of Schools

(LIA - County Office of Education)
Kimberly Thompson
1300 17th St.
Bakersfield, CA 93301
Phone: (661) 636-4668
Fax: (661) 636-4329
kithompson@kern.org

Kernville Union School District

(LIA - School District)
Alisa Hinkle
5109 Lake Isabella Blvd.
P.O. Box 2905
Lake Isabella, CA 93240-2905
Phone: (760) 379-2556
Fax: (760) 379-1257
alhinkl@zeus.kern.org

Lamont School District

(LIA - School District)
Yolanda Romero
7915 Burgundy Ave.
Lamont, CA 93241-1350
Phone: (661) 845-2724
Fax: (661) 845-5114
yromero@lesd.us

Madera County Children and Families Commission - First 5

(LIA - First 5 Children and Families Commission)
Diane Sandoval
525 E. Yosemite Ave.
Madera, CA 93638-3334
Phone: (559) 661-5155
Fax: (559) 675-4950
dsandoval@first5madera.net

Madera Unified School District

(LIA - School District)
Rosa Garcia
1902 Howard Rd.
Madera, CA 93637-5123
Phone: (559) 675-4500
Fax: (559) 675-4526
Garcia_R@madera.k12.ca.us

Merced County Office of Education

(LIA - County Office of Education)
Jaci Westbrook
632 W. 13th St.
Merced, CA 95340-5908
Phone: (209) 385-5394
Fax: (209) 385-8415
jwestbrook@mcoe.org

Tulare County Health & Human Services Agency

(LIA - Local Public Health Department)
Peggy Redfern
115 E. Tulare Ave.
Tulare, CA 93274-4019
Phone: (559) 685-2519
Fax: (559) 685-2695
predfern@tularehhsa.org

Tulare County Office of Education

(LIA - County Office of Education)
Nani Rowland
7000 Doe Ave., Bldg. 700
Visalia, CA 93291-9287
Phone: (559) 651-0130
Fax: (559) 651-1995
nrowland@tcoe.org

Visalia Unified School District

(LIA - School District)
Neva Wright
5000 W. Cypress Ave.
Visalia, CA 93277
Phone: (559) 730-7409
Fax: (559) 730-7576
nwright@visalia.k12.ca.us

Desert Sierra Region

Riverside and San Bernardino Counties

San Bernardino County Department of Public Health

(Regional Network - Local Public Health Department)
Melody Lopez
351 N. Mountain View Ave., Rm. 104
San Bernardino, CA 92415-0010
Phone: (909) 387-6320
Fax: (909) 387-6899
mlopez@dph.sbcounty.gov

Physical Activity Specialist

Pamela Sampson
351 N. Mountain View, Room 104
San Bernardino, CA 92415-0010
Phone: (909) 387-9144
psampson@dph.sbcounty.gov

African American Campaign

San Bernardino County Department of Public Health
Astrid Mickens
351 N. Mountain View Ave., Rm. 104
San Bernardino, CA 92415-0010
Phone: (909) 387-0173
Fax: (909) 387-6899
amickens@dph.sbcounty.gov

Contractor Listing/Project Coordinator by Region FFY09

Latino Campaign

San Bernardino County Department of Public Health
Leticia S. Allen
351 N. Mountain View Ave., Rm. 104
San Bernardino, CA 92415-0010
Phone: (909) 387-6851
Fax: (909) 387-6899
lallen@dph.sbcounty.gov

Children's Power Play! Campaign

San Bernardino County Department of Public Health
Melani Dhason
351 N. Mountain View Ave., Rm. 104
San Bernardino, CA 92415-0010
Phone: (909) 387-6380
Fax: (909) 387-6899
mdhason@dph.sbcounty.gov

Retail Program

San Bernardino County Department of Public Health
Maureen Medina
351 N. Mountain View Ave., Rm. 104
San Bernardino, CA 92415-0010
Phone: (909) 387-9196
mmedina@dph.sbcounty.gov

Worksite Program

County of Riverside Community Health Agency
Valerie Comeaux
4065 County Circle Dr., Ste. 207
Riverside, CA 92503
Phone: (951) 358-5385
vacomeaux@co.riverside.ca.us

City of Montclair

(LIA - City Government)
Michelle Roche
5111 Benito St.
Montclair, CA 91763-2808
Phone: (909) 625-9451
Fax: (909) 399-9751
mroche@ci.montclair.ca.us

City of San Bernardino Park and Recreation Community

(LIA - Parks & Recreation Department)
Glenda Martin-Robinson
201-A N. 'E' St., Ste. 103
San Bernardino, CA 92401
Phone: (909) 384-5332
Fax: (909) 384-5160
robinson_gl@ci.san-bernardino.ca.us

County of Riverside Community Health Agency

(LIA - Local Public Health Department)
Durreen Qureshi
4065 County Circle Dr., Ste. 207
Riverside, CA 92503
Phone: (951) 358-5888
Fax: (951) 358-5472
dqureshi@co.riverside.ca.us

San Bernardino County Department of Public Health

(LIA - Local Public Health Department)
Jeanne Silberstein
Nutrition Program
351 N. Mountain View Ave., Rm. 104
San Bernardino, CA 92415-0010
Phone: (909) 387-6697
Fax: (909) 387-6899
jsilberstein@dph.sbcounty.gov

Temple Community Outreach Center

(Faith-Based - Faith Community)
Loistine Herndon
1583 W. Union St.
San Bernardino, CA 92411-2546
Phone: (909) 383-9588
Fax: (909) 383-0432
Templeoutreach@att.net

Gold Coast Region

Santa Barbara and Ventura Counties

Ventura County Public Health Department

(Regional Network - Local Public Health Department)
Alicia Padilla-Villicana
2323 Knoll Dr., Ste. 318
Ventura, CA 93003-7307
Phone: (805) 677-5254
Fax: (805) 677-5220
Alicia.Villicana@ventura.org

Physical Activity Specialist

Mary Arevalo
2323 Knoll Dr., 3rd Fl.
Ventura CA 93003
Phone: (805) 677-5255
Fax: (805) 677-5220
mary.arevalo@ventura.org

Latino Campaign

Ventura County Public Health Department
Rene Posada
2323 Knoll Dr., Ste. 322
Ventura, CA 93003
Phone: (805) 677-5234
Fax: (805) 677-5220
rene.posada@ventura.org

Children's Power Play! Campaign

Ventura County Public Health Department
JoAnn Torres
2323 Knoll Dr., Ste. 311, 3rd Fl.
Ventura, CA 93003
Phone: (805) 677-5267
Fax: (805) 677-5220
joann.torres@ventura.org

Retail Program

Ventura County Public Health Department
Vacant
2323 Knoll Dr., #318
Ventura, CA 93003
Phone: (805) 677-5255

Santa Barbara County Public Health Department

(LIA - Local Public Health Department)
Scott McCann
345 Camino Del Remedio, Bldg. 4, Room 332
Santa Barbara, CA 93110-1332
Phone: (805) 681-5270
Fax: (805) 681-5436
scott.mccann@sbcphd.org

Ventura County Public Health Department

(LIA - Local Public Health Department)
Silvia Lopez-Navarro, R.D.
2323 Knoll Dr., Ste. 313
Ventura, CA 93003-7307
Phone: (805) 677-5261
Fax: (805) 677-5220
silvia.lopez-navarro@ventura.org

Ventura Unified School District

(LIA - School District)
Anne Thille
255 W. Stanley Ave., Ste. 100
Ventura, CA 93001-1348
Phone: (805) 641-5000 ext. 1309
Fax: (805) 653-7850
anne.thille@venturausd.org

Contractor Listing/Project Coordinator by Region FFY09

Gold Country Region

Sacramento, San Joaquin, Solano, Stanislaus, and Yolo Counties

Health Education Council

(Regional Network - Community-Based)

Ramona Mosley
3950 Industrial Blvd., Ste. 600
West Sacramento, CA 95691-6509
Phone: (916) 556-3344
Fax: (916) 446-0427
rmosley@healthedcouncil.org

Physical Activity Specialist

Phil Bensing
3950 Industrial Blvd., Ste. 600
West Sacramento, CA 95691
Phone: (916) 556-3344
Fax: (916) 446-0427
pbensing@healthedcouncil.org

African American Campaign

Health Education Council
Cynthia Robinson
3950 Industrial Blvd., Ste. 600
West Sacramento, CA 95691
Phone: (916) 556-3344 ext.120
Fax: (916) 556-3358
crobinson@healthedcouncil.org

Latino Campaign

Health Education Council
Aide Silva
3950 Industrial Blvd., Ste. 600
West Sacramento, CA 95691
Phone: (916) 556-3344 ext.126
Fax: (916) 446-0427
asilva@healthedcouncil.org

Worksite Program

Health Education Council
Mai Linh Tompkins
3950 Industrial Blvd., Ste. 600
West Sacramento, CA 95691
Phone: (916) 556-3344 ext.122
Fax: (916) 446-0427
mltompkins@healthedcouncil.org

Children's Power Play! Campaign

Health Education Council
Mellissa Meng
3950 Industrial Blvd., Ste. 600
West Sacramento, CA 95691
Phone: (916) 556-3344 ext. 115
Fax: (916) 446-0427
mmeng@healthedcouncil.org

Retail Program

Health Education Council
Edith Gomez
3950 Industrial Blvd., Ste. 600
West Sacramento, CA 95691
Phone: (916) 556-3344
egomez@healthedcouncil.org

California Rural Indian Health Board, Inc.

(LIA - Indian Tribal Organizations)
Stacey Kennedy
4400 Auburn Blvd., 2nd Fl.
Sacramento, CA 95841-4129
Phone: (916) 929-9761
Fax: (916) 929-7246
stacey.kennedy@carihb.net

California WIC Program

(Other State Public Entities)
Linnea Sallack
3901 Lennane Dr.
Sacramento, CA 95834
Phone: (916) 928-8806
Fax: (916) 263-3321
Linnea.Sallack@cdph.ca.gov

Community Services Planning Council, Inc. - Sacramento Hunger Coalition

(LFNE)
Melissa Ortiz-Gray
909 12th St., Ste. 200
Sacramento, CA 95814-2942
Phone: (916) 447-7063
Fax: (916) 447-7052
mortiz-gray@communitycouncil.org

Elk Grove Unified School District

(LIA - School District)
Anne Gaffney
8389 Gerber Rd.
Sacramento, CA 95828-4528
Phone: (916) 686-7735
Fax: (916) 689-1563
agaffney@egusd.net

Health Education Council

(LFNE - Community-Based)
Julie Dang
3950 Industrial Blvd., Ste. 600
Sacramento, CA 95691-6509
Phone: (916) 556-3344
Fax: (916) 446-0427
jdang@healthedcouncil.org

Debra Oto-Kent
Project Director
3950 Industrial Blvd., Ste. 60
Sacramento, CA 95691
dotokent@healthedcouncil.org

San Joaquin County Public Health Services

(LIA - Local Public Health Department)
Shené Bowie
1601 E. Hazelton Ave.
Stockton, CA 95205-6229
Phone: (209) 468-5610
Fax: (209) 468-5611
sbowie@sjcphs.org

Solano County Health and Social Services Department

(LIA - Local Public Health Department)
Denise Kirnig
275 Beck Ave., MS 5-240
Fairfield, CA 94533
Phone: (707) 784-8131
Fax: (707) 421-6385
ddkirnig@solanocounty.com

Stanislaus County Health Services Agency

(LIA - Local Public Health Department)
Rocio Huerta
P.O. Box 3271
Modesto, CA 95353-3271
Phone: (209) 558-7150
Fax: (209) 558-7538
rhuerta@schsa.org

Yolo County Health Department

(LIA - Local Public Health Department)
Charlene Shon
137 N. Cottonwood St., Ste. 2600
Woodland, CA 95695
Phone: (530) 666-8447
Fax: (530) 666-3984
charlene.shon@yolocounty.org

Los Angeles Region

Los Angeles County

Los Angeles County Department of Health Services

(Regional Network - Local Public Health Department)
Suzanne Bogert
Nutrition Program
3530 Wilshire Blvd., Ste. 800
Los Angeles, CA 90010-2343
Phone: (213) 351-7875
Fax: (213) 351-2793
sbogert@ph.lacounty.gov

Contractor Listing/Project Coordinator by Region FFY09

Physical Activity Specialist

Ismael Aguila
3530 Wilshire Blvd, Ste. 800
Los Angeles, CA 90010
Phone: (213) 663-3603
iaguila@sbcglobal.net

African American Campaign

Los Angeles County Department of
Health Services
Meka Webb
3530 Wilshire Blvd., Ste. 800
Los Angeles, CA 90010
Phone: (213) 351-7331
Fax: (213) 351-2793
mwebb@ph.lacounty.gov

Worksite Program

Los Angeles County Department of
Health Services
Lauren Neel
3530 Wilshire Blvd., Ste. 800
Los Angeles, CA 90010
Phone: (213) 351-7337
lneel@ph.lacounty.gov

Retail Program

Los Angeles County Department of
Health Services
Teresa Blanco
3530 Wilshire Blvd., Ste. 800
Los Angeles, CA 90010
Phone: (213) 351-7889
tblanco@ph.lacounty.gov

Latino Campaign

University of California Cooperative
Extension, Los Angeles County
Alejandrina Orozco
4800 Cesar E. Chavez Ave.
Los Angeles, CA 90022
Phone: (323) 260-3829
Fax: (323) 881-1951
orozco@ucdavis.edu

Children's Power Play! Campaign

University of California Cooperative
Extension, Los Angeles County
Rachel Surls (Interim)
4800 Cesar E. Chavez Ave.
Los Angeles, CA 90022
Phone: (323) 260-3886
Fax: (323) 260-1951
ramabie@ucdavis.edu

ABC Unified School District

(LIA - School District)
Dipa Shah
16700 Norwalk Blvd.
Cerritos, CA 90703
Phone: (562) 926-5566
Fax: (562) 404-8926
Dipa.Shah@abcusd.k12.ca.us

Alhambra Unified School District

(LIA - School District)
Judy Huffaker
1515 W. Mission Rd.
Alhambra, CA 91803
Phone: (626) 943-3560
huffaker_judy@alhambra.k12.ca.us

Alondra Church of Christ

(Faith-Based - Faith Community)
Brenda Payne
2301 E. Alondra Blvd.
Compton, CA 90221-4201
Phone: (310) 632-8432
Fax: (310) 632-1147
brenda.payne@gmail.com

Baptist Church of the New Covenant

(Faith-Based - Faith Community)
Elaine Williams
10843 Kenney St.
Norwalk, CA 90650-7516
Phone: (323) 730-1920
Fax: (323) 730-9777
ewilliams@theclinicinc.org

CANGRESS, dba LA CAN (LFNE)

Becky Dennison
456 S. Main St., Ground Floor
Los Angeles, CA 90013-1320
Phone: (213) 228-0024
Fax: (213) 228-0048
beckyd@cangress.org

City of Duarte Parks and Recreation Department

*(LIA - Parks & Recreation
Department)*
Donna Georgino
1600 E. Huntington Dr.
Duarte, CA 91010-2534
Phone: (626) 357-7931
Fax: (626) 358-0018
georginod@accessduarte.com

City of Long Beach Department of Health and Human Services

(LIA - Local Public Health Department)
Lara Turnbull
2525 Grand Ave.
Long Beach, CA 90815-1765
Phone: (562) 570-4294
Fax: (562) 570-4052
Lara_Turnbull@longbeach.gov

City of Pasadena Public Health Department

(LIA - Local Public Health Department)
Mary Urtecho-Garcia
Nutrition & Physical Activity Project
1845 N. Fair Oaks Ave., Rm. 1505
Pasadena, CA 91103-1620
Phone: (626) 744-6163
Fax: (626) 744-6114
mugarcia@cityofpasadena.net

Compton Unified School District (LIA - School District)

Tracie Thomas
1726 E. 117th St.
Los Angeles, CA 90059-2512
Phone: (310) 639-4321
Fax: (310) 635-8268
trthomas@compton.k12.ca.us

Downey Unified School District

(LIA - School District)
Colleen Anderson
12340 Woodruff Ave.
Downey, CA 90241
Phone: (562) 940-6280
Fax: (562) 469-6677
cmanderson@dusd.net

Dry Sponge - New Life Christian Center

(Faith-Based - Faith Community)
Sandra Roman-Morales
2600 S. La Brea Ave.
Los Angeles, CA 90016-2807
Phone: (323) 218-9218
Fax: (909) 592-4710
pastorsandy@5adayla.com

East Los Angeles College

(LIA - Public Colleges & Universities)
Manjit Kaur
1301 Avenida Cesar Chavez
Monterey Park, CA 91754-6001
Phone: (323) 780-7936
Fax: (323) 780-7168
manjitkaurjs@msn.com

Contractor Listing/Project Coordinator by Region FFY09

El Monte City School District

(LIA - School District)
Michael Burns
3246 Meeker Ave.
El Monte, CA 91731-2684
Phone: (626) 453-3733
Fax: (626) 350-4860
mburns@emcsd.org

Gangsters for Christ

(Faith-Based - Faith Community)
Faye (Ilesia) Jones
8780 S La Salle Ave.
Los Angeles, CA 90047-3319
Phone: (323) 646-8528
gangstersforchrist@yahoo.com

Girls Club of Los Angeles

(Faith-Based - Faith Community)
Curtis Thomas
2057 W. Century Blvd.
Los Angeles, CA 90047-4031
Phone: (323) 754-2122
Fax: (323) 754-4353
cthomas@girlsclubla.org

Hawthorne School District

(LIA - School District)
Steve Baldwin
Ramona Elementary
4617 W. 136th St.
Hawthorne, CA 90250-5735
Phone: (310) 349-0744
Fax: (310) 349-1945
stbaldwin@hawthorne.k12.ca.us

Long Beach Unified School District

(LIA - School District)
Robin Sinks
1299 E. 32nd St., #10
Signal Hill, CA 90755-5239
Phone: (562) 997-0632
Fax: (562) 997-0413
rsinks@lbusd.k12.ca.us

Los Angeles County Office of Education

(LIA - County Office of Education)
Maryam Shayegh
9300 Imperial Highway
Downey, CA 90242-2813
Phone: (562) 922-6306
Fax: (562) 922-6388
Shayegh_Maryam@lacoedu

Los Angeles Trade Technical College

(LIA - Public Colleges & Universities)
Christine Bou Sleiman
400 W. Washington Blvd.
Los Angeles, CA 90015-4108
Phone: (213) 763-7377
Fax: (213) 763-5393
Christine.elhaj@gmail.com

Los Angeles Unified School District

(LIA - School District)
Roberta Acantilado
6651-C Balboa Blvd.
Van Nuys, CA 91406-5529
Phone: (818) 609-2550
Fax: (818) 609-2580
Roberta.acantilado@lausd.net

Monrovia Unified School District

(LIA - School District)
Valerie Parsons
325 E. Huntington Dr.
Monrovia, CA 91016-3585
Phone: (626) 471-2776
Fax: (626) 471-2088
vparsons@monrovia.k12.ca.us

Montebello Unified School District

(LIA - School District)
Piper Mattson
1612 Mines Ave.
Montebello, CA 90640-5416
Phone: (323) 887-7967
Fax: (323) 722-5371
mattson_piper@montebello.k12.ca.us

New Economics for Women

(LFNE)
Margarita Alvarez Gomez
303 S. Loma Dr.
Los Angeles, CA 90017
Phone: (213) 923-3808
Fax: (213) 483-7848
margarita.alvarez@neworg.us

Maggie Cervantes
303 S. Loma Dr.
Los Angeles, CA 90017
Phone: (213) 483-2060 ext. 301
mcervantes@neworg.us

Pasadena Unified School District

(LIA - School District)
Katia Ahmed
351 S. Hudson Ave.
Pasadena, CA 91109
Phone: (626) 798-2458
Fax: (626) 798-2658
kahmed@pusd.us

Rosemead School District

(LIA - School District)
Diane Ezzo
3907 N. Rosemead Blvd., Ste. 130
Rosemead, CA 91770-1984
Phone: (626) 312-2900 ext. 255
Fax: (626) 307-6178
dezzo@rosemead.k12.ca.us

Santa Clarita Valley School Food Services Agency

(LIA - School District)
Tracy Fiscella
25210 Anza Dr.
Santa Clarita, CA 91355-3496
Phone: (661) 295-1574 ext. 117
Fax: (661) 295-0981
tfiscella@scsvfsa.org

Southeast Asian Community Alliance

(LFNE)
Sissy Nga Trinh
970 N. Broadway, Ste. 209
Los Angeles, CA 90012
Phone: (213) 628-8667
Fax: (213) 928-4100
sissy@seaca-la.org

University of Southern California - Keck Diabetes Prevention Initiative

(LFNE - Public Health)
Valerie Ruelas
6430 Sunset Blvd., Ste. 1500
Los Angeles, CA 90028
Phone: (323) 361-8416
Fax: (323) 361-8043
vruelas@chla.usc.edu

Vaughn Next Century Learning Center

(LIA - School District)
Suzanne Llamas
13330 Vaughn St.
San Fernando, CA 91340-2216
Phone: (818) 896-7461
Fax: (818) 834-9036
sllamas@vaughncharter.com

North Coast Region next page

Contractor Listing/Project Coordinator by Region FFY09

North Coast Region

Del Norte, Humboldt, Mendocino, Napa, and Sonoma Counties

California Health Collaborative - North Coast

(Regional Network)

Jennifer McClendon

1101 College Ave., Ste. 215

Santa Rosa, CA 95404

Phone: (707) 543-5810 ext. 203

Fax: (707) 543-5803

jmccclendon@healthcollaborative.org

Physical Activity Specialist

Laurel Chambers

1101 College Ave., Ste. 215

Santa Rosa, CA 95404

Phone: (707) 543-5810 ext. 202

lchambers@scfymca.org

Retail Program

California Health Collaborative

Angie Corwin

1101 College Ave., Ste. 215

Santa Rosa, CA 95404

Phone: (707) 543-5810 ext. 201

ACorwin@healthcollaborative.org

Children's Power Play! Campaign

Sonoma County Family YMCA

Deb Harris

1101 College Ave., Ste. 215

Santa Rosa, CA 95404

Phone: (707) 543-5810 ext. 204

Fax: (707) 543-5813

dharris@scfymca.org

Calistoga Joint Unified School District

(LIA - School District)

Joan Bruno

Calistoga Elementary School

1327 Berry St.

Calistoga, CA 94515

Phone: (707) 942-4398

Fax: (707) 942-0970

jbruno@calistoga.k12.ca.us

Community Alliance with Family Farmers

(LFNE - Community-Supported Agriculture)

Michelle Wyler

922 E St., Ste. 202

Eureka, CA 95501

Phone: (707) 444-3255

Fax: (707) 444-2589

mrwyler@yahoo.com

Del Norte Unified School District

(LIA - School District)

Deborah Kravitz

301 W. Washington Blvd.

Crescent City, CA 95531-8340

Phone: (707) 464-0273

Fax: (707) 464-0785

dkravitz@delnorte.k12.ca.us

Humboldt County Office of Education

(LIA - County Office of Education)

Linda Prescott

901 Myrtle Ave.

Eureka, CA 95501-1219

Phone: (707) 445-7042

Fax: (707) 441-3299

lprescott@humboldt.k12.ca.us

Manila Community Services District

(LIA - City Government)

Holley Pering

1901 Park St.

Arcata, CA 95521-9650

Phone: (707) 445-3309

Fax: (707) 445-3309

manilacc@suddenlinkmail.com

Napa County Office of Education

(LIA - County Office of Education)

Julie McClure

5789 State Farm Dr., Ste. 230

Rohnert Park, CA 94928-3613

Phone: (707) 664-4232

Fax: (707) 664-2418

julie.mcclure@calserves.org

Sonoma County Office of Education

(LIA - County Office of Education)

Lynn Garric

5340 Skylane Blvd.

Santa Rosa, CA 95403

Phone: (707) 524-2600

Fax: (707) 522-2889

lgarric@scoe.org

Ukiah Unified School District

(LIA - School District)

Terry Nieves

925 N. State St.

Ukiah, CA 95482-3411

Phone: (707) 462-2561

Fax: (707) 463-2120

tnieves@uusd.net

United Indian Health Services, Inc.

(LIA - Indian Tribal Organizations)

Alison Aldridge

1600 Weeot Way

Arcata, CA 95521-4734

Phone: (707) 825-4098

Fax: (707) 825-5035

alison.aldridge@crihb.net

Orange County Region

Orange County

Orange County Health Care Agency

(Regional Network - Local Public Health Department)

Anna Luciano

Nutrition Services

1725 W. 17th St.

Santa Ana, CA 92706-2316

Phone: (714) 834-8092

Fax: (714) 834-8028

aluciano@ochca.com

Physical Activity Specialist

Hiba Shublak

1725 W. 17th St.

Santa Ana, CA 92706

Phone: (714) 834-8594

Fax: (714) 834-8028

hshublak@yahoo.com

Worksite Campaign

Orange County Health Care Agency

Henry Torres

1725 W. 17th St.

Santa Ana, CA 92706

Phone: (714) 834-8130

Fax: (714) 834-8028

htorres@ochca.com

Retail Program

Orange County Health Care Agency

Elsa Amezuca

1725 W. 17th St., Bldg. 50

Santa Ana, CA 92706

Phone: (714) 834-7842

EAMEZCUA@ochca.com

Latino Campaign

Community Action Partnership of Orange County

Maria Rosas

7180 Lampson Ave.

Garden Grove, CA 92841

Phone: (714) 899-3684 ext. 5311

Fax: (714) 899-3824

mrosas@capoc.org

Contractor Listing/Project Coordinator by Region FFY09

Children's Power Play! Campaign

Community Action Partnership of
Orange County
Gaby Hernandez
7180 Lampson Ave.
Garden Grove, CA 92841
Phone: (714) 899-3684
Fax: (714) 899-3824
ghernandez@capoc.org

Huntington Beach Union High School District

(LIA - School District)
Lauren Teng
14325 Goldenwest St., Bldg.1
Westminster, CA 92683
Phone: (714) 894-1698
Fax: (714) 894-8198
lteng@hbuhsd.org

Newport-Mesa Unified School District

(LIA - School District)
Geoff Ianniello
2985 Bear St., Bldg. E
Costa Mesa, CA 92626-4300
Phone: (714) 424-7557
Fax: (714) 424-7596
gianniello@nmusd.us

Orange County Superintendent of Schools - ACCESS

(LIA - County Office of Education)
Yvonne Ortega
2910 Redhill Ave.
Costa Mesa, CA 92626
Phone: (714) 327-1038
Fax: (714) 327-0187
yortega@access.k12.ca.us

Orange County Superintendent of Schools - Coalition

(LIA - County Office of Education)
Kari Tuggle, MS, CHES, RD
200 Kalmus Dr.
P.O. Box 9050
Costa Mesa, CA 92628-9050
Phone: (714) 327-1056
Fax: (714) 540-3464
KTuggle@ocde.us

Orange Unified School District

(LIA - School District)
Katryn Soltanmorad
726 W. Collins Ave.
Orange, CA 92867-5514
Phone: (714) 997-6354
Fax: (714) 997-6149
ksoltanmorad@orangeusd.org

Orange County Health Care Agency

(LIA - Local Public Health Department)
Anna Luciano-Acenas
Nutrition Services
1725 W. 17th St.
Santa Ana, CA 92706-2316
Phone: (714) 834-8673
Fax: (714) 834-8028
aluciano@ochca.com

Santa Ana Unified School District

(LIA - School District)
Frances Byfield
1601 E. Chestnut
Santa Ana, CA 92701-6322
Phone: (714) 558-5528
Fax: (714) 245-5088
frances.byfield@sausd.us

San Diego and Imperial Region

Imperial and San Diego Counties

The Regents of the University of California, San Diego

(Regional Network - Public Colleges & Universities)
Blanca Melendrez
Division of Community Pediatrics
4305 University Ave., Ste. 590
San Diego, CA 92105-1625
Phone: (619) 681-1041
Fax: (619) 681-0666
bmelendrez@ucsd.edu

Physical Activity Specialist

Larissa Johnson
4305 University Ave., Ste. 590
San Diego, CA 92105
Phone: (619) 681-0676
Fax: (619) 681-0666
lrjohnso@ucsd.edu

African American Campaign

University of California, San Diego
Morris Woods
1836 Dixie St.
Oceanside, CA 92054
Phone: (760) 433-5886
Fax: (760) 433-8704
mlfinance1@sbcglobal.net

Latino Campaign

University of California, San Diego
Karemi Alvarez
4305 University Ave., Ste. 590
San Diego, CA 92105
Phone: (619) 681-0684
Fax: (619) 681-0666
kalvarez@ucsd.edu

Worksite Campaign

University of California, San Diego
Jessica Cerra
Community Pediatrics
4305 University Ave., Ste. 590
San Diego, CA 92105
Phone: (619) 243-7254
Fax: (619) 681-0666
jcerra@ucsd.edu

Children's Power Play! Campaign

University of California San Diego
Michael Gieck
4305 University Ave., Ste. 590
San Diego, CA 92105
Phone: (619) 681-0659
Fax: (619) 681-0666
mgieck@ucsd.edu

Retail Program

University of California, San Diego
Victor Paz
4305 University Ave., Ste. 590
San Diego, CA 92105
Phone: (619) 681-0640
vpaz@ucsd.edu

Friendly Church of God in Christ

(Faith-Based - Faith Community)
Susan Woods
1836 Dixie St.
Oceanside, CA 92054-3411
Phone: (760) 433-5886
Fax: (760) 433-3546
healthcoord1@sbcglobal.net

Imperial County Public Health Department

(LIA - Local Public Health Department)
Yoliviviana Sanchez
935 Broadway St.
El Centro, CA 92243-2349
Phone: (760) 482-4939
Fax: (760) 352-9933
yolivivianasanchez@imperialcounty.net

Contractor Listing/Project Coordinator by Region FFY09

Southern Indian Health Council, Inc.

(LIA - Indian Tribal Organizations)

Lisa Turner
P.O. Box 2128
Alpine, CA 91903-2128
Phone: (619) 445-1188
Fax: (619) 659-3147
lturner@sihc.org

The Regents of the University of California, San Diego

(LIA - Public Colleges & Universities)

Kari Herzog
Division of Community Pediatrics
4305 University Ave., Ste. 590
San Diego, CA 92105-1625
Phone: (619) 681-0648
Fax: (619) 681-0666
kherzog@ucsd.edu

Youth4rce, Inc.

(Faith-Based - Faith Community)

Dajahn Blevins
6875 El Cajon Blvd., Ste. B
San Diego, CA 92115-3828
Phone: (619) 252-6314
Fax: (858) 552-4299
dblevins@nethere.com

Sierra Cascade Region

Shasta County

California Health Collaborative

(Regional Network)

Patricia Mannel
25 Jan Ct., Ste. 130
Chico, CA 95928-4418
Phone: (530) 345-2483
Fax: (530) 345-3214
pmannel@healthcollaborative.org

Physical Activity Specialist

Michele Buran
1311 Mangrove Ave., Ste. #B
Chico, CA 95926
Phone: (530) 898-4318
Fax: (530) 345-0668
mlburan@gmail.com

Children's Power Play! Campaign

California Health Collaborative
Emily Ruffner
25 Jan Ct., Ste. 130
Chico, CA 95928
Phone: (530) 345-2483 ext. 210
Fax: (530) 345-3214
eruffner@healthcollaborative.org

Retail Program

California Health Collaborative
Kimberly Ames
25 Jan Ct., Ste. 130
Chico, CA 95928
Phone: (530) 345-2483
kames@healthcollaborative.org

California State University, Chico, Research Foundation - SCNAC

(Nonprofit Incentive Awardee - School-Related)

Cindy Wolff
Center for Nutrition and Activity Promotion
CSU, Chico, Building 25
Chico, CA 95929-0235
Phone: (530) 898-5288
Fax: (530) 898-5382
cwoff@csuchico.edu

Shasta County Office of Education

(LIA - County Office of Education)

Tanya Marshall
3200 Adams Ln.
Redding, CA 96001
Phone: (530) 224-3214
Fax: (530) 224-3201
tmarshall@shastacoe.org

Shasta County Public Health

(LIA - Local Public Health Department)

Michelle Sabol
2660 Breslauer Way
Redding, CA 96001-4246
Phone: (530) 225-5150
Fax: (530) 229-8460
msabol@co.shasta.ca.us

Statewide

Alameda County Office of Education - California Healthy Kids Resource Center (CHKRC)

(Statewide Project - County Office of Education)

Deborah Wood
313 W. Winton Ave., Rm. 176
Hayward, CA 94544-1136
Phone: (510) 670-4586
Fax: (510) 670-4582
DWood@californiahealthykids.org

California Association of Food Banks - Food Stamp Outreach

(Food Stamp Outreach - Food Bank)

Jessica Bartholow
1611 Telegraph Ave., Ste. 830
Oakland, CA 94612
Phone: (510) 272-4435
Fax: (510) 272-9171
jessica@cafoodbanks.org

California Association of Food Banks - Nutrition Education

(Nonprofit Incentive Awardee - Food Bank)

Jessica Bartholow
1611 Telegraph Ave., Ste. 830
Oakland, CA 94612
Phone: (510) 272-4435
Fax: (510) 272-9171
jessica@cafoodbanks.org

California Department of Education

(CDPH Sister Program - Non-DPH State Government)

Shannan Young
1430 N St., Ste. 1500
Sacramento, CA 95814-5901
Phone: (916) 445-9137
Fax: (916) 322-3749
syoung@cde.ca.gov

California Department of Public Health, Chronic Disease Control, California Project LEAN

(CDPH Sister Program - DPH Sister Program)

JoAnn Gooley
P.O. Box 997413, MS 7211
Sacramento, CA 95899-7413
Phone: (916) 449-5294
Fax: (916) 552-9909
joann.gooley@cdph.ca.gov

California Department of Public Health, Chronic Disease Control, California Project LEAN - Youth Empowerment Programs

(CDPH Sister Program - DPH Sister Program)

Nestor Martinez
P.O. Box 997413, MS 7211
Sacramento, CA 95899-7413
Phone: (916) 552-9941
Fax: (916) 552-9909
nestor.martinez@cdph.ca.gov

Contractor Listing/Project Coordinator by Region FFY09

**Central Valley Health Network -
Food Stamp Outreach**

*(Food Stamp Outreach - Community-
Based)*

Maribel Morales
2000 O St., Ste. 100
Sacramento, CA 95811
Phone: (916) 552-2846
Fax: (916) 444-2424
mmorales@cvhnclinics.org

Central Valley Health Network

*(Nonprofit Incentive Awardee -
Community-Based)*

Cynthia Peshek
2000 O St., Ste. 100
Sacramento, CA 95811
Phone: (916) 552-2846
Fax: (916) 444-2424
cpeshek@cvhnclinics.org

**The Regents of the University of
California, San Francisco - GIS
Project**

(Other - Other Government)

Matthew Stone
P.O. Box 997377, MS 7204
Sacramento, CA 95899-7377
Phone: (916) 552-9918
Fax: (916) 449-5415
matthew.stone@cdph.ca.gov

Planning for Partnerships

AFTERSCHOOL GOAL:

Partner	Partner Contributes to AS Goal	AS Contributes to Partner Goal	Recruit – How? Who? When?	Challenges and Strengths

Potential Funding Resources Health and Wellness Programming in Afterschool

There is tremendous potential to think 'outside the funding box' for health and wellness programming. Emphasis on this programming allows us to partner with organizations and funders to bring diversified funding into afterschool. This is just a partial list to get you started on seeking funds or in-kind resources for your health and wellness programming.

David and Lucile Packard Foundation

Lucile Packard Foundation

Lucile Packard Children's Hospital Foundation

The Health Trust

Kaiser Permanente (both local and regional)

American Cancer Society

Robert Wood Johnson Foundation

California Wellness Foundation

The California Endowment

Hispanic Foundation

Centers for Disease Control (CDC - Federal Funding)

Carol M White Physical Education Program (DOE - Federal Funding)

National Institutes of Health (NIH - Federal Funding)

Health and Human Services Minority Health (HHS - Federal Funding)

Hospital Foundations

Health Insurance Foundations

Santa Clara County Health Department (STEPS grant)

Bay Area Nutrition and Physical Activity Coalition (BANPAC)

Entertainment Industry Foundation (EIF)

Corporate Foundations (e.g., Lockheed Martin, Cisco)

Network for a Healthy California

School PTA or Home & School Clubs

Community Club Sponsors (e.g., Rotary, Kiwanis)

Local Business Sponsorships

Team Up for Youth

City of San Jose Healthy Neighborhood Venture Funds (HNVF)

Child and Adult Care Food Program (CACFP)

JC Penney Afterschool

United Way